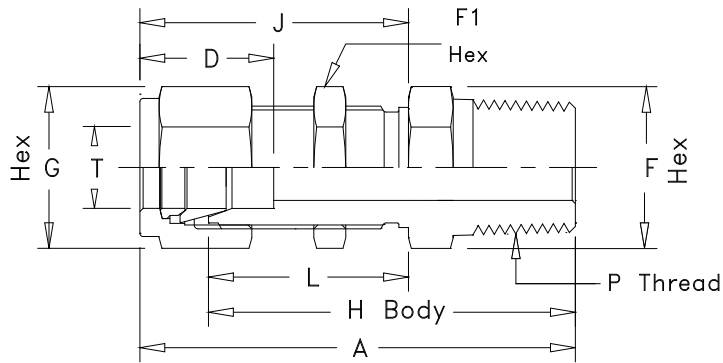


# Addison Instrumentation Tube Fittings

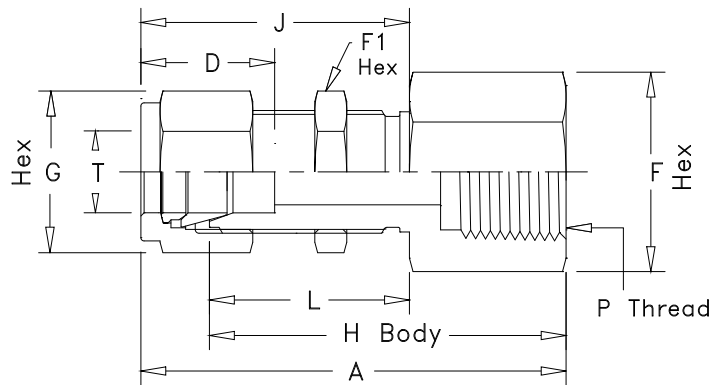
## Bulkhead Male Connectors



Available with NPT or BSPT threads

METRIC TUBE												INCH TUBE													
Dimensions in mm												Dimensions in inches													
Part No	T o/d	P	A	D	F	G Nut	F <sub>1</sub>	H	J	L	Panel Hole	Panel Thick	Part No	T o/d	P	A	D	F	G Nut	F <sub>1</sub>	H	J	L	Panel Hole	Panel Thick
6mMBH4	6	1/4	53.6	15.3	16	14	16	46.2	33.6	26.2	11.5	10.2	4MBH2	1/4	1/8	1.95	0.60	5/8	9/16	5/8	1.66	1.32	1.03	29/64	0.40
12mMBH8	12	1/2	68.8	22.8	24	22	24	58.7	42	31.8	19.5	12.7	4MBH4	1/4	1/4	2.10	0.60	5/8	9/16	5/8	1.81	1.32	1.03	29/64	0.40
													6MBH4	3/8	1/4	2.26	0.66	3/4	11/16	3/4	1.97	1.45	1.16	37/64	0.44
													6MBH6	3/8	3/8	2.26	0.66	3/4	11/16	3/4	1.97	1.45	1.16	37/64	0.44
													6MBH8	3/8	1/2	2.51	0.66	7/8	11/16	3/4	2.22	1.45	1.16	37/64	0.44
													8MBH8	1/2	1/2	2.68	0.90	15/16	7/8	15/16	2.28	1.65	1.25	49/64	0.50
													8MBH6	1/2	3/8	2.49	0.90	15/16	7/8	15/16	2.09	1.65	1.25	49/64	0.50
													12MBH12	3/4	3/4	3.00	0.96	1-3/16	1-1/8	1-3/16	2.60	1.87	1.47	1-1/64	0.66

## Bulkhead Female Connectors



Available with NPT or BSPT threads

METRIC TUBE												INCH TUBE													
Dimensions in mm												Dimensions in inches													
Part No	T o/d	P	A	D	F	G Nut	F <sub>1</sub>	H	J	L	Panel Hole	Panel Thick	Part No	T o/d	P	A	D	F	G Nut	F <sub>1</sub>	H	J	L	Panel Hole	Panel Thick
6mFBH4	6	1/4	51.8	15.3	19	14	16	44.5	33.6	26.2	11.5	10.2	4FBH2	1/4	1/8	1.85	0.60	5/8	9/16	5/8	1.56	1.32	1.03	29/64	0.40
12mFBH8	12	1/2	66.5	22.8	27	22	24	56.5	42	32.0	19.5	12.7	4FBH4	1/4	1/4	2.04	0.60	3/4	9/16	5/8	1.75	1.32	1.03	29/64	0.40
													6FBH4	3/8	1/4	2.17	0.66	3/4	11/16	3/4	1.88	1.45	1.16	37/64	0.44
													8FBH6	1/2	3/8	2.43	0.90	15/16	7/8	15/16	2.03	1.65	1.25	49/64	0.50
													8FBH8	1/2	1/2	2.62	0.90	1-1/16	7/8	15/16	2.22	1.65	1.25	49/64	0.50

Dimension are for reference only, and subject to change.