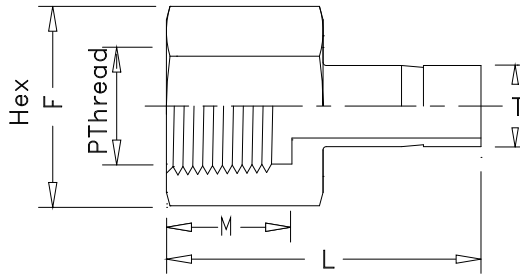


Addison Instrumentation Tube Fittings

Female Adapters

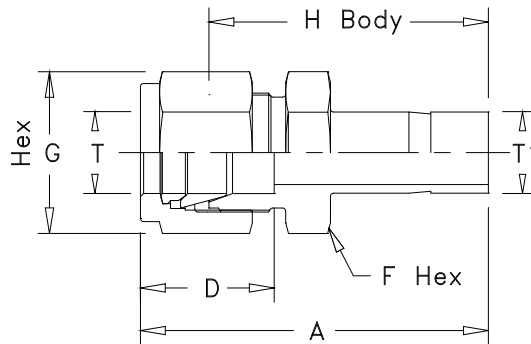


Available with NPT or BSPT threads

METRIC TUBE		Dimensions in mm			
Part No	T	P	M	F	L
6mATPF2	6	1/8	9.9	14	32.5
6mATPF4	6	1/4	15.0	19	37.0
8mATPF4	8	1/4	15.0	19	37.6
10mATPF4	10	1/4	15.0	19	38.0
10mATPF6	10	3/8	15.0	22	40.0
10mATPF8	10	1/2	19.8	27	46.5
12mATPF4	12	1/4	15.0	19	43.7
12mATPF8	12	1/2	19.8	27	52.0

INCH TUBE		Dimensions in inches			
Part No	T	P	M	F	L
4ATPF2	1/4	1/8	0.39	9/16	1.25
4ATPF4	1/4	1/4	0.59	3/4	1.46
5ATPF4	5/16	1/4	0.59	3/4	1.48
5ATPF6	5/16	3/8	0.59	7/8	1.44
6ATPF4	3/8	1/4	0.59	3/4	1.50
6ATPF6	3/8	3/8	0.59	7/8	1.59
6ATPF8	3/8	1/2	0.78	1-1/16	1.84
8ATPF4	1/2	1/4	0.59	3/4	1.71
8ATPF6	1/2	3/8	0.59	7/8	1.79
8ATPF8	1/2	1/2	0.78	1-1/16	2.04
12ATPF8	3/4	1/2	0.78	1-1/16	2.08
12ATPF12	3/4	3/4	0.81	1-5/16	2.16

Reducers



METRIC TUBE		Dimensions in mm					
Part No	T o/d	T1 o/d	A	D	F	G	H
6mRED8	6	8	40.0	15.3	14	14	32.5
6mRED10	6	10	40.7	15.3	14	14	33.0
6mRED12	6	12	46.5	15.3	14	14	39.0
8mRED10	8	10	42.0	16.2	16	16	34.5
8mRED12	8	12	47.6	16.2	16	16	40.0
10mRED6	10	6	42.5	17.2	19	19	35.0
12mRED6	12	6	45.0	22.8	22	22	35.0

INCH TUBE		Dimensions in inches					
Part No	T o/d	T1 o/d	A	D	F	G	H
2RED4	1/8	1/4	1.42	0.50	7/16	7/16	1.16
4RED2	1/4	1/8	1.45	0.60	1/2	9/16	1.16
4RED6	1/4	3/8	1.60	0.60	1/2	9/16	1.31
4RED8	1/4	1/2	1.82	0.60	9/16	9/16	1.53
6RED4	3/8	1/4	1.63	0.66	5/8	11/16	1.34
6RED8	3/8	1/2	1.91	0.66	5/8	11/16	1.62
8RED6	1/2	3/8	1.84	0.90	13/16	7/8	1.44

Dimension are for reference only, and subject to change.