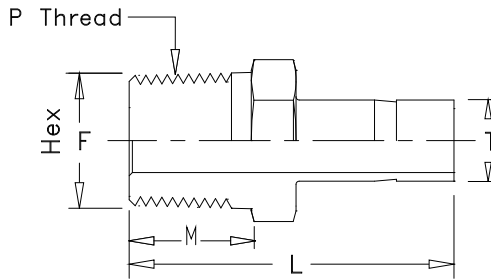


# Addison Instrumentation

## Tube Fittings

### Male Adapters



Available with NPT or BSPT threads

METRIC TUBE		Dimensions in mm				
Part No	T o/d	P	M	F	L	
6mATPM 2	6	1/8"	9.7	12	32.80	
6mATPM 4	6	1/4"	14.2	14	38.10	
6mATPM 6	6	3/8"	14.2	19	38.10	
6mATPM 8	6	1/2"	19.2	22	42.07	
8mATPM 2	8	1/8"	9.7	12	39.10	
8mATPM 4	8	1/4"	14.2	14	39.10	
8mATPM 6	8	3/8"	14.2	19	37.31	
8mATPM 8	8	1/2"	19.2	22	42.86	
10mATPM 2	10	1/8"	9.7	12	33.34	
10mATPM 4	10	1/4"	14.2	14	39.90	
10mATPM 6	10	3/8"	14.2	19	40.60	
10mATPM 8	10	1/2"	19.2	22	42.66	
12mATPM 4	12	1/4"	14.2	16	42.66	
12mATPM 6	12	3/8"	14.2	19	44.45	
20mATPM 8	20	1/2"	19.2	24	50.80	
20mATPM12	20	3/4"	19.2	27	51.59	
20mATPM16	20	1"	23.9	36	57.94	
25mATPM12	25	3/4"	23.9	27	57.94	
25mATPM16	25	1"	23.9	36	65.09	

INCH TUBE		Dimensions in inches				
Part No	T o/d	P	M	F	L	
2ATPM 2	1/8	1/8	0.09	7/16	1.16	
2ATPM 4	1/8	1/4	0.09	9/16	1.37	
3ATPM 2	3/16	1/8	0.12	7/16	1.19	
4ATPM 2	1/4	1/8	0.19	7/16	1.25	
4ATPM 4	1/4	1/4	0.19	9/16	1.46	
4ATPM 6	1/4	3/8	0.19	11/16	1.49	
4ATPM 8	1/4	1/2	0.19	7/8	1.71	
5ATPM 4	5/16	1/4	0.25	9/16	1.50	
6ATPM 4	3/8	1/4	0.28	9/16	1.53	
6ATPM 6	3/8	3/8	0.28	11/16	1.56	
6ATPM 8	3/8	1/2	0.28	7/8	1.78	
8ATPM 4	1/2	1/4	0.39	9/16	1.75	
8ATPM 6	1/2	3/8	0.39	11/16	1.78	
8ATPM 8	1/2	1/2	0.39	7/8	2.00	
10ATPM 8	5/8	1/2	0.50	7/8	2.06	
12ATPM 8	3/4	1/2	0.59	7/8	2.06	
12ATPM12	3/4	3/4	0.59	1-11/16	2.06	
12ATPM16	3/4	1	0.59	1-3/8	2.28	
16ATPM12	1	3/4	0.80	1-1/16	2.31	
16ATPM16	1	1	0.80	1-3/8	2.60	

Dimension are for reference only, and subject to change.